

Interest items:

- www.MNSage.com
- **Sage Contact #s**
Phone: 651-201-5600
Fax: 651-201-5601
 [Please reserve our toll-free number for patients]



Sage Advice

A newsletter for clinics participating in the Sage Screening Program, providing important current information and program updates

Volume V, Issue I

January / February 2010

JOIN THE SAGE TEAM

The 18th annual Susan G. Komen Twin Cities Race For The Cure is Sunday May 9, 2010. Please consider joining the Sage Team for Race For The Cure.

How to join the Sage team: Go to www.komenminnesota.org. Follow the instructions to register as a team member – when you have the option to choose your team, chose the Sage Screening Program from the drop down list of teams.



THANK YOU!!!!!!

**FROM THE 122,314
 MINNESOTA
 WOMEN
 SCREENED
 THROUGH THE
 SAGE PROGRAM**

SLEEP IN FOR THE CURE: YOU DO NOT NEED TO ATTEND THE RACE.*

You can choose to participate in the “sleep for the cure” and your donation works just as hard to fight breast cancer.

The Race For The Cure raises money to fight breast cancer, the most commonly diagnosed cancer among women in Minnesota and the second leading cause of cancer death among women. In 2009 Susan G. Komen Twin Cities Race for the Cure raised over \$2 million and awarded the Sage Screening Program at the Minnesota Department of Health \$500,000 to pay for breast cancer screening and diagnostic tests. These dollars are used to detect cancers early in women who are uninsured or underinsured and meet Sage income requirements. As a result, lives are saved.

** Live in Greater MN? Don't worry this option is for those who just can't get to the Twin Cities for the Race.*

SAGE RAFFLE: ENTER TO WIN TWO TWINS TICKETS for May 8 IN EXCLUSIVE STADIUM CLUB SEATS

NEW this year: Enter the Sage raffle to win two Twins tickets to the exclusive Legends Club. Join the Sage Team for Race for the Cure and you will be automatically entered into the drawing.* Tickets are for Saturday May 8, 2010 at 12:10 p.m. Be one of the first to see the Twins play at the new stadium in these spectacular seats.**



*No purchase necessary – you may also sign up for the drawing by sending an e-mail to michelle.strangis@state.mn.us with “Twins Ticket Raffle” in the subject line and your name and phone number in the message. One entry per person. Raffle will be conducted April 19, 2010.

** See a view of the field from the seats (Legends Club section L row 3) that will be raffled (http://www.seats3d.com/mlb/minnesota_twins/)

Inside this issue

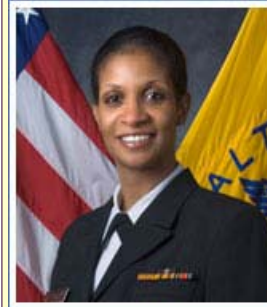
- Clinician's Corner 2
- Sage Salute 2
- Sage Updates 3
- Stories from the road 3
- Copies, copies 4
- Promotional Material 4



Clinician's

C
o
r
n
e
r

Ask Dr. Miller



Commander
Jacqueline Miller,
MD is the Medical
Director for CDC's
National Breast and
Cervical Cancer
Early Detection

A couple of interesting articles have come across my desk recently. The first is an excellent overview of Cancer screening guidelines and associated issues from ACS: [Cancer screening in the United States, 2009: A review of current American Cancer Society guidelines and issues in cancer screening. Robert A. Smith, Vilma Cokkinides and Otis W. Brawley, CA Cancer J Clin 2009;59:27-41.](#) The second is research that suggests what age is best to begin screening women with a familial history of breast cancer: [Age of onset in familial breast cancer as background data for medical surveillance. A Brandt, J Lorenzo Bermejo, J Sundquist, and K Hemminki. British Journal of Cancer \(2010\) 102, 42 – 47.](#)

- Jim McLean, RN, MSN

Sage Partner wins ACS Award!

The American Cancer Society Lane Adams Quality of Life Award promotes improved quality of life for all persons with cancer and their families through public recognition of exemplary individuals who practice compassionate, skilled cancer care and who extend the warm hand of service. Since 1988 the awards recognize the unsung heroes of cancer care who give hope, comfort and the very best care to cancer patients and their families.

Julissa Rios was recently honored for her work as the leader of the La Nueva Esperanza. La Nueva Esperanza is a one of kind of support group in Minnesota. It is believed to be the only support group run by Latina women for other Latina women. Every third Saturday of each month, the basement conference room of Westside Clinic rouses up with women cheering for one another. They talk, cry, laugh, try on different wigs, put on make-up, share stories and somewhere along the way they find hope, encouragement and a sense that they are not alone. Because of her unparalleled dedication to improving the health of her community, Julissa Rios receives smiles, hugs and kisses from the women every time they visit the support group. If there are true crusaders dedicating their lives to improving the health of their communities and saving lives, Julissa Rios stands tall among a few.

Question: How should we evaluate a women referred to our program with ASC-H cytology and HPV negative results.

Answer: American Society for Colposcopy and Cervical Pathology (ASCCP) guidelines state that ASC-H be referred for immediate colposcopy regardless of HPV status. The data shows that this cytology has at least a 50% chance of finding CIN 2 or 3 on biopsy. ASC-H typically has a high rate of HPV infection, so using HPV results as a triage is not recommended. Therefore, a negative HPV result from co-testing should be ignored in light of this very significant cytology. She should proceed to having a colposcopy. If her colposcopy results show no CIN 2 or 3, ASCCP recommends either repeat Pap testing at 6 and 12 months or HPV test in 12 months. Since her initial HPV test was negative, I would be concerned that the follow-up would still be negative whereas her Pap could still be abnormal requiring further diagnostic testing.

More information on the Lane Adams Quality of Life Award: http://www.cancer.org/docroot/AA/AA_6.asp?sitearea=AA&level=1

Sage Salute!!! There are over 350 sites across the state that provide Sage services to women. We at MDH would like to highlight some of our partners. Don't worry, we are not going to let a little fact (like it will take over 50 years in a bi-monthly newsletter to highlight each provider) prevent us from saluting you.

Hendricks Clinic / Community Hospital Association (HCHA) provides comprehensive health care to a



service area of approx. 5,000 to 6,000 persons in southwestern Minnesota and east central South Dakota.

Hendricks Clinic / Hospital has been part of the Sage Network since 1994. Even though they see only 2 or 3 women per month under the Sage Program, those 175 women they have screened for breast and cervical cancer under the Sage Program over the years may not have been screened at all without the commitment to the community that is integral to Hendricks Clinic / Hospital.

Our hats are off to all the staff that works to make Sage a part of the services of Hendricks clinic / hospital., especially Kim Stroschein, Barb Anderson, Emily Austin, Carrie Gorham, and Beverly Gullund.



“This year the FPL did not change. Therefore, the 2010 Sage income guidelines remain the same as the 2009 guidelines.”

Important Program updates from Sage

New Sage Income Guidelines:

Sage income eligibility is based on the Federal Poverty Level (FPL). At the end of every January the FPL is adjusted. Sage changes its income eligibility to correspond. The new guidelines are listed above. Remember that the prior year income guidelines apply until the new ones are announced. This year the FPL did not change. Therefore, the 2010 Sage income guidelines remain the same as the 2009 guidelines. Remember, they are always posted at www.health.state.mn.us/divs/hpcd/ccs/mbcccp/sande.htm.

2010 Sage Income Guidelines		
Household #	Monthly Income	Yearly Income
1	2,256	27,075
2	3,035	36,425
3	3,815	45,775
4	4,594	55,125
5	5,373	64,475
6	6,152	73,825
+1 more	+ 779	+ 9,350

New Reimbursement Rates:

For dates of service from January 1, 2010 on, Sage will reim-

burse at the new rates. Sage rates are subject to changes in Medicare rates. The new Sage rates are posted on it's website at: www.health.state.mn.us/divs/hpcd/ccs/mbcccp/rates.htm.

Rates for the SagePlus Program can be found at:

www.health.state.mn.us/divs/hpcd/ccs/sageplus/clinic_updates.htm.

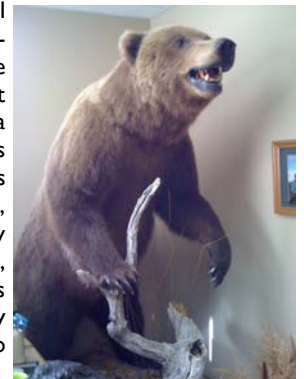
Old Claims:

Sage denies claims if they are received more than 1 year from the date of the service being billed. Please be as timely as possible with your billing.

Sage On the Road: Our newest RC



For this new job I am required to travel to parts of Minnesota that I certainly never would have gone to in the past. This 2 day trip started out early this morning leaving St Cloud and traveling southwest to Hendricks MN. I have never traveled further SW than Marshall, population roughly 8-9K. So here I go, 2 days after they had had blizzard conditions. The roads were passable and really quite clear. As I drove through some very rural farmland I realized why their roads were closed 2 days before. I saw vast open land covered in glistening white snow with wind that blew me away. When I drove into Hendricks (thank goodness for GPS) I was very surprised that the population was only 750 or so people. I was surprised that they had a hospital. I arrived a little early so I went to main street and found a local restaurant for lunch, "Irene's by Julie" (yep that's the name, apparently it used to be Irene's for many, many years and when Julie took it over she kept Irene's name in the name). They were just setting out the luncheon special which was listed as Italian salad bar, \$5.95. So I waited a bit and walked over to look at the salad bar as she was setting the individual salads out. Well one thing totally caught my eye. There in the middle was pea salad. It looked like the pea salad my mom used to make. So of course I had the special for lunch. Oh my, the broccoli salad was good, the Italian pasta thing was good, but the pea salad was to die for, and yes it was like my mom's with onion and cheese. When I went to pay the lady says, "I am only going to charge you for a half order because you didn't eat enough". What a pleasant surprise. As I was in Irene's I pulled out my work and personal cell phones, hmmm no service on either. OK I guess that's understandable. So off I went to the clinic to do the training I was scheduled to do. As I waited in the waiting room I was looking at framed articles about the rural healthcare, etc., etc. There was a picture of a doctor with a full size bear. I asked the receptionist, is that bear really in his office, she said yes plus others. I was shown back to Dr. Tabb McCluskey's office. OMG! not only was there a bear, there was a buffalo head, a croc head, some deer heads with antlers intertwined, several birds, on and on. I did my training with 8 very nice ladies. I found out that the clinic is privately owned, the hospital has 15 beds and is busy. This little secluded diamond in MN was such a pleasure to see and the people and town reminded me so much of my hometown in Texas. It was a real pleasure to visit. Hmmm I am going to Tracy MN tomorrow, I wonder if there are some wonders there too.....



-Mona Helgeson

NOTE:

www.MNCancerResources.org

This is a valuable resource for your patients that might be dealing with cancer. It links them to local services.

Save a tree and some time: watch the photocopies

Want to do yourself a favor and help Sage out along the way? We receive a large amount of photocopies of our forms. Many times it is unclear as to why they are sent, or sometimes just plain unnecessary. Normally the Sage forms should be submitted as the originals coming from the clinic site, the radiology department, or the Pap lab facility after the patient receives her services. If you are sending photocopies because you are unsure whether the originals have been sent, perhaps a new routine could correct this problem. Your regional coordinator is available if you need assistance in establishing such a routine. If you have another reason for sending copies, please attach a note explaining the need for a copy.



Submitting photocopies takes the time to pull the invoice. At Sage it code the form, shred it (if the original is have to check to see if how much time

requires extra work. On your end it requires someone the charts, make the copies, and staple them to the takes the time to pull the form from the invoice, check to see if we need it or not, then enter it or already in). If the original subsequently comes in, we the information is the same as the prior copy. See and paper this could save all of us?

Sometimes a Sage Missing Form report. However, could you please put a small note as to why you are sending us a photocopy? It may not be as clear to us as it was to you.

photocopies are useful, such as responding to a Sage Missing Form report. However, could you please put a small note as to why you are sending us a photocopy? It may not be as clear to us as it was to you.

We hope we can save you some time and work and maybe a tree along the way!

-The billing and data-entry staff

We're on the Web:
www.MNSage.com

Cancer Control Section
85 East 7th Place
St. Paul, MN 55101

Phone: 651-201-5600
Fax: 651-201-5601
E-mail:
michelle.strangis@state.mn.us

To receive this newsletter please send a request to the email address above



Sage Promotional Materials

Please consider promoting Sage by using any of the promotional items below. Click on the item to go to the Sage Website where you can obtain the item.

